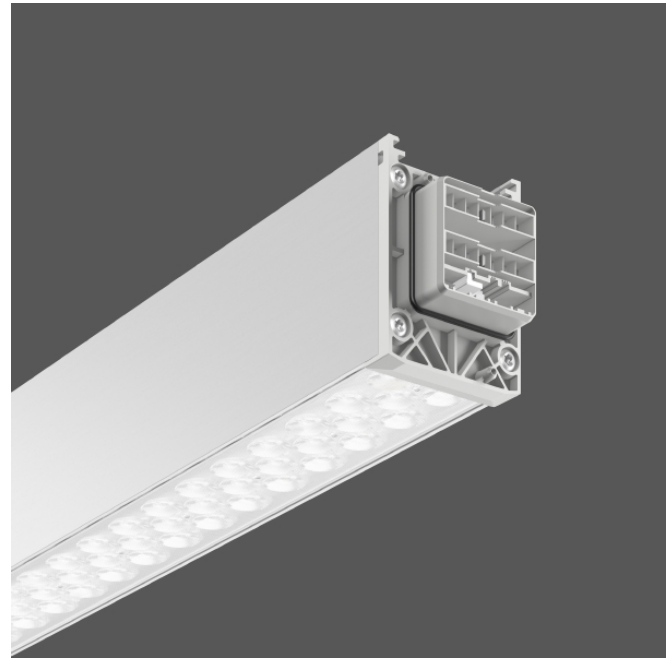
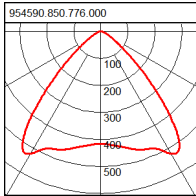
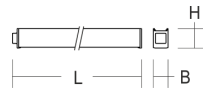


# LINEDO

954590.850.776.000 | LINEDO continuous line luminaire



Continuous line luminaire  
4051859506997  
LED  
L 4547, B 58, H 76



Rapid-installation complete module for universal use as a continuous line luminaire. System profile made of aluminium extrusion profile, anodised. High-efficiency LED units with optimum light control thanks to clear plastic (PC) lens optics. Wide beam light distribution. Simple, tool-free installation of system profiles using separate accessories for cable, chain or ceiling suspension. Tool-free connection and mechanical connectors to secure. 7-poles LINEDO connector (5 x 2.5 mm<sup>2</sup> / 2 x 1.5 mm<sup>2</sup>). Phase can be set via patented bridge without opening the luminaire. Please order supply module, connection and mounting accessories separately. Luminaires with limited surface temperature in accordance with DIN EN 60598-2-24 for use in environments in which a deposit of non-conductive dust on the luminaire can be expected.

## Colour

Colour aluminium , anodised

## Dimensions

Length L 4,547 mm  
Width B 58 mm  
Height H 76 mm  
Weight 9,6 kg

## Lamp

Lamp 1 LED  
Colour temperature lamp 1 5000 K  
Colour rendering index (CRI) 1 80  
Colour consistency (McAdam) 1 3  
Lifetime of lamp 1 combined 80000 h (L80/B10)  
Photobiological safety according to EN 62471 Risk group 1

## Lighting technology

Colour temperature 5.000 K  
Rated luminous flux 13.500 lm  
Glare evaluation UGR (4H 8H) 1 20  
Beam angle 88°

## Electrical

Control gear DALI  
Voltage 220 - 240 V / 0 Hz, 50 - 60 Hz  
Luminaires on B10A fuse 11  
Luminaires on B16A fuse 18  
Luminaires on C10A fuse 19  
Luminaires on C16A fuse 30  
Inrush current / inrush current duration 10 A / 870 µs  
Ripple current / Flicker 1 %  
System power 81 W  
Luminaire efficacy 167 lm/W  
Total harmonic distortion (THD) 8 %  
Power factor 0,98

## Approbations

Type of Protection IP 54  
Protection Class I  
Glow Wire Test 850°C - 30 seconds  
Impact Protection IK03 (0,35 Joule)  
Safety marks D-mark, F-mark  
Ambient temperature min. -25 °C  
Ambient temperature max. 50 °C  
ULOR 0  
Trade mark CE  
CIE Flux Code / CEN Flux Code 73 96 99 100 100  
Non-maintained power mode Umgebungstemperatur / temperature ambiante => -25 °C ... + 50 °C

Accessories			
982678.000.2	Initial power feed for LINEDO continuous line luminaire module 7-pole, connection socket	982665.000	Suspension kit for grid ceilings with steel cable 1,500 mm and caddy clip
982678.000.3	Initial power feed for LINEDO continuous line luminaire module 7-pole, connection plug	982717.000	Suspension kit with steel cable 5,000 mm
982698.000.3	Middle power feed for LINEDO continuous line luminaire module 7-pole, connection socket / plug	982718.000	Suspension kit with chain 5,000 mm
982698.000.4	Middle power feed for LINEDO continuous line luminaire module 7-pole, connection socket / socket	982719.000	Suspension kit for grid ceilings with steel cable 5,000 mm and caddy clip
982698.000.5	Middle power feed for LINEDO continuous line luminaire module 7-pole, connection socket / socket	982580.010	Adapter for direct ceiling installation
982698.000.6	Universal power feed for LINEDO continuous line luminaire module 14-pole, connection socket / plug	982666.000	Adapter for direct ceiling installation in grid ceilings (caddy clip)
982773.000.4	L-connector for LINEDO modules (can also be used as feed from above)	982699.009	End cap low profile for LINEDO socket
982773.000.5	7-pole, connection socket / socket L-connector for LINEDO modules (can also be used as feed from above)	982700.009	End cap low profile for LINEDO plug
982773.000.6	7-pole, connection plug / plug L-connector for LINEDO modules (can also be used as feed from above)	982680.000	Connector for suspended installation
982773.000.7	7-pole, connection plug / socket L-connector for LINEDO modules (can also be used as feed from above)	982812.000	
982774.000.4	7-pole, connection socket / plug T-connector for LINEDO modules (can also be used as feed from above)	982814.000	
982774.000.5	7-pole, connection socket / plug - plug T-connector for LINEDO modules (can also be used as feed from above)	982751.000	Fixing clamp
982774.000.6	7-pole, connection socket / plug - socket T-connector for LINEDO modules (can also be used as feed from above)		
982774.000.7	7-pole, connection plug / socket - plug T-connector for LINEDO modules (can also be used as feed from above)		
982775.000.1	7-pole, connection plug / socket - socket X-connector for LINEDO modules (can also be used as feed from above)		
982661.000	7-pole, connection plug / socket / plug / socket Suspension kit with steel cable 1,500 mm		
982662.000	Suspension kit with chain 1,500 mm		
982663.000	Suspension for steel cable (cable not included)		
982664.000	Suspension kit with open ring (chain not included)		