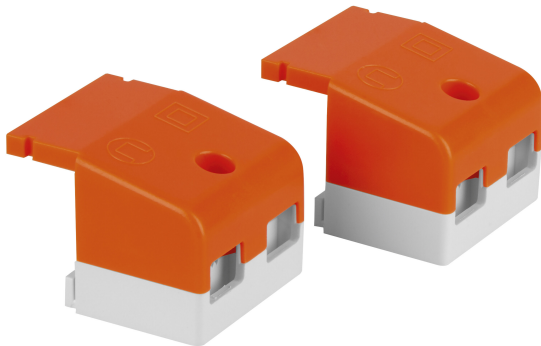


# PRODUCT DATASHEET

## DR AY PC-PFM-CLAMP DUO

LED DRIVER NON-DALI Cable Clamp | Driver accessories kit for LED DRIVER DIP SWITCH / PHASE-CUT



---

### Areas of application

- Downlights, flat luminaires
- Suitable for different cable types
- Suitable for indoor applications

---

### Product benefits

- Simple and quick cable mounting
- Sufficient space for cable connection
- Free cable connection thanks to open flaps

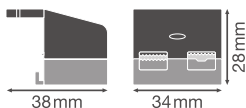
---

### Product features

- Easy to install and flexible cable clamps
- Separate cable clamps for primary and secondary side
- Pre-fixed, captive screws

## TECHNICAL DATA

### Dimensions & Weight



|                |         |
|----------------|---------|
| Length         | 38.3 mm |
| Width          | 34,0 mm |
| Height         | 28,5 mm |
| Product weight | 1.00 g  |

### Colors & materials

|               |              |
|---------------|--------------|
| Product color | Orange/White |
|---------------|--------------|

### Temperatures & operating conditions

|  |      |
|--|------|
| Max.housing temperature in case of fault | - °C |
|--|------|



### Capabilities

|          |    |
|----------|----|
| Dimmable | No |
|----------|----|

## EQUIPMENT / ACCESSORIES

- DR AY DS-PFM -CLAMP DUO suitable for LED DRIVER DIP SWITCH PFM
- DR AY PC-PFM-CLAMP DUO suitable for LED DRIVER PHASE-CUT PFM

## DOWNLOAD DATA

| DOWNLOAD DATA  |                   |
|--|-------------------|
|  | PRODUCT DATASHEET |
|  | Catalogs          |

## LOGISTICAL DATA

| Product code  | Packaging unit (Pieces/Unit) | Dimensions (length x width x height) | Gross weight | Volume               |
|---------------|------------------------------|--------------------------------------|--------------|----------------------|
| 4058075313187 | Shipping box<br>20           | 172 mm x 172 mm x 59 mm              | 99.00 g      | 1.75 dm <sup>3</sup> |

| Product code  | Packaging unit (Pieces/Unit) | Dimensions (length x width x height) | Gross weight | Volume                |
|---------------|------------------------------|--------------------------------------|--------------|-----------------------|
| 4058075313194 | Shipping box<br>120          | 534 mm x 190 mm x 147 mm             | 946.00 g     | 14.91 dm <sup>3</sup> |

The mentioned product code describes the smallest quantity unit which can be ordered. One shipping unit can contain one or more single products. When placing an order, for the quantity please enter single or multiples of a shipping unit.

---

## DISCLAIMER

Subject to change without notice. Errors and omission excepted. Always make sure to use the most recent release.