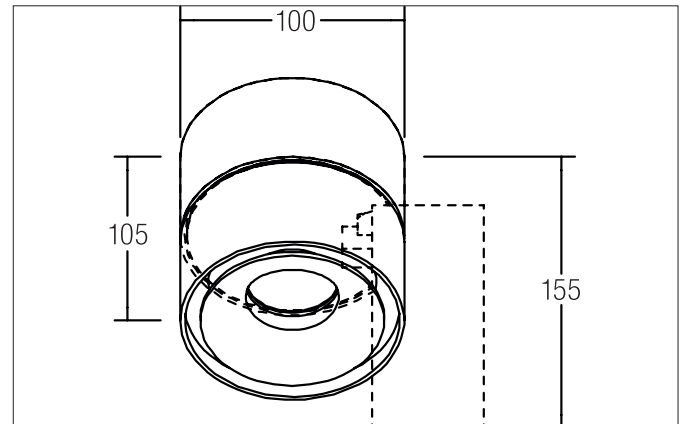


CIRCLE LED surface-mounted spot CIRCLE, with all-round light gap

Artikel-Nr. 12061073

Licht.
Für Generationen.**Tender**

LED surface-mounted spot CIRCLE, with all-round light gap, white, round. Surface mounting, Ceiling-mounted Mounting method: Surface mounting, Place of installation: Ceiling-mounted, Material: Aluminium / Glass, Degree of protection: according to DIN EN 60529 IP20, Protection class: (EN 61140) I, Voltage: 230V AC 50Hz, Power: 9.8W, Amount of light sources / fittings: 1.0 Qty, Luminous flux: 675lm, Colour temperature: 3.000 K, Light colour : White, Beam angle: 34°, Adjustability: Rotatable and adjustable head, With control gear: Yes, Control: on/off.

Article data	
Artikel-Nr.	12061073
GTIN	4250047781295
Series name	CIRCLE
Kurzbeschreibung	LED surface-mounted spot CIRCLE, with all-round light gap
Material	Aluminium / Glass
Colour	White
Type of surface	Matt
Shape	round
Outer diameter	100 mm
Aufbauhöhe	105 mm
scope of delivery	Incl. converter for connection to the 230-V mains voltage
weight	0.807 kg

CIRCLE LED surface-mounted spot CIRCLE, with all-round light gap

Artikel-Nr. 12061073

Licht.
Für Generationen.

Lighting technology	
Colour temperature	3000 K
Light colour	White
Light output	Direct
Luminous flux	675 lm
System efficiency	69 lm/W
Colour rendering	CRI > 80
Reflector	High-gloss
Beam angle	34 °
Light sharing	Symmetric

Operating technology of the luminaires	
System output	9.8 W
Voltage type	AC
AC nominal voltage max	220 V
Frequenz max.	50 Hz
Lamp	LED
Protection class	I
Degree of protection	IP20
Control	on/off
Leuchtmittelwechsel möglich	ja

Mounting technology	
Mounting method	Surface mounting
Place of installation	Ceiling-mounted
Adjustability	Rotatable and adjustable head
Swivel angle	90°
Rotation angle	355°
Head adjustable angle	90°
Material cover	Glass transparent

Packing data	
Gross weight	0.891 kg
Length of packaging	135 mm
Packaging width	135 mm
Packaging height	130 mm